

# Available Payload collection V1.2



This document is just a collection of information, for reference only.

# Index

## **PUBLIC SAFETY**

1. Spotlight
2. Loudspeaker
3. Multi-Gas Detection System
4. spectrum analyzer
5. DROP kit

## **ENERGY**

1. Methane Leakage Detector
2. Single-line lidar
3. Dual-camera HD zoom ai gimbal camera
4. thermal camera with 50mm LENS
5. Four in one corona camera

## **SURVEYING**

1. five-lens aerial oblique camera
2. LIDAR
3. Multispectral Camera

# U10 LASER METHANE LEAKAGE DETECTOR

☑PSDK ☑DJI PI

## Partner introduction

AILF (Shandong) Instruments combines advanced laser gas detection technologies with industrial applications and developed a full line of gas leakage detection products, including methane (CH<sub>4</sub>), ethane (C<sub>2</sub>H<sub>6</sub>), propane (C<sub>3</sub>H<sub>8</sub>), ammonia (NH<sub>3</sub>), hydrogen fluoride (HF) and additional noxious gases.

## Product and solution

The U10 is a light-weight, high-sensitivity gas detector based on Tunable Diode Laser Absorption Spectroscopy (TDLAS), which enables rapid identification of methane from up to 100 m away, or at a concentration as low as 5ppm.m. Powered by DJI SkyPort, the U10 can be seamlessly integrated with DJI Matrice 200 Series V1 and V2 platforms.

## Compatible drone Platform

M300RTK  
M200 series

## APPLICATIONS

Critical Facility Inspection

## More information

[https://terra-1-g.djicdn.com/851d20f7b9f64838a34cd02351370894/others/EN-a5\\_U10%20Gas%20Detector\\_en\\_format\\_191009.pdf](https://terra-1-g.djicdn.com/851d20f7b9f64838a34cd02351370894/others/EN-a5_U10%20Gas%20Detector_en_format_191009.pdf)

[www.ailf.com.cn](http://www.ailf.com.cn)

## Contact

info@ailf.com.cn



# WINGSLAND Z15 GIMBAL SPOTLIGHT

☑PSDK ☑DJI PI

## Partner introduction

SHENZHEN BOOY Technology Co., Ltd is an UAV developer founded in Shenzhen. Committed to providing customers with the most secure and reliable integrated UAV solutions, BOOY Technology continues to innovate and improve the safety and stability of its products while striving to enhance usability.

## Product and solution

1. Supports Dual Downward Gimbals
2. Strobe mode switch : Always on、18Hz strobe
3. Air Cooling System
4. Intelligent temperature protection
5. support DJI Pilot

## Compatible drone Platform

M300RTK  
M200 series

## APPLICATIONS

Public Safety  
Firefighting  
Emergency Response/Search and Rescue  
Law Enforcement  
Infrastructure/Facility Repair and Maintenance

## More information

[https://terra-1-g.djicdn.com/851d20f7b9f64838a34cd02351370894/ot\\_hers/Z15\\_Spotlight\\_en.pdf](https://terra-1-g.djicdn.com/851d20f7b9f64838a34cd02351370894/ot_hers/Z15_Spotlight_en.pdf)

[www.jlidrone.com](http://www.jlidrone.com)

## Contact

sales@jlidrone.com



# PSDK102S FIVE-LENS AERIAL OBLIQUE CAMERA

☑PSDK ☑DJI PI

## Partner introduction

1. Committed to the development and production of UAV aerial survey and tilt camera.
2. Committed to the development of related software for drone tilt photography and aerial survey.

## Product and solution

1. Intelligent self-test: closed-loop detection when the camera is turned on with five angles of view
2. Active temperature control: built-in temperature control module, high temperature detection temperature, active heat dissipation.
3. Standard LOED screen: real-time display of camera status, flight control signal, number of photos in five angles, camera temperature and other information.
4. Down-view video transmission: supports real-time video transmission under HDMI, and can be connected to M210 series to realize dual-picture transmission.
5. Aircraft Unicom: Support the synchronization of the camera status and the M210 ground station information.
6. USB3.0 interface: Provide a faster transfer rate and improve efficiency.

## Compatible drone Platform

M300RTK

## APPLICATIONS

Cadastral survey  
Urban planning  
Smart City  
Real Estate Confirmation  
Integrated premises and emergency command

## Specs

QTY of Lens	5pcs
Focal Length	35mm
Effective Pixels	24.3MP(single lens) / 120MP in total
Exposure Time	≥0.8s
Sensor Size	APS-C, 23.5*15.6mm
Lens Angle	45 degree
Storage	640GB (up to 1280G)
Data Reading	Type-C
Power Supply	SkyPort integrated power
Operating Temperature	-10~50℃
IP Rating	IP43
Size	140*140*80mm
Weight	650g
Material	CNC aluminium alloy

## More information

<http://www.shareuavtec.com/>

## Contact

[shareuav@163.com](mailto:shareuav@163.com)



# LOUDSPEAKER

☑PSDK

## Product and solution

1. Data transmission is stable and flight safety is guaranteed
2. Online text to speech conversion
3. Background sound and broadcast content can be played simultaneously
4. Male voice, female voice, midrange, high pitch support independent choice
5. Support TF storage
6. Highly integrated, ready to use
7. Adjustable pitch angle
8. Safety protection, stable performance

## Specs

Weight: <600g Pitch control angle: 0~90°  
Power: 35W Decibel: 80dB@48m

## Compatible drone Platform

M300RTK  
M200 series

## Application

Public security  
rescue

## More information

<https://gzczzn.com/productArgumentsServlet?productId=MP130>

## Contact

czzn@gzczzn.com



# SNIFFER4D V2 MULTI-GAS DETECTION SYSTEM

☑PSDK

## Product and solution

Sniffer4D is a complete drone-based multi-gas detection system which consists of a drone-mounted gas detection device and powerful analytic software. Sniffer4D is able to measure and visualize real-time gas concentration distribution, providing timely & actionable information for industries such as environmental protection, inspection and emergency response. Through DJI SkyPort, Sniffer4D can be seamlessly integrated with DJI M300 RTK and M210 series.

## Specs

Parameters  
(configurable,  
up to 9)

PM2.5	PM10	SO <sub>2</sub>	CO	NO <sub>2</sub>	O <sub>3</sub>	VOCs	
LEL/CH <sub>4</sub>	CO <sub>2</sub>	H <sub>2</sub> S	NH <sub>3</sub>	HCl	H <sub>2</sub>	CL <sub>2</sub>	PH <sub>3</sub>
Wind Speed & Direction	Nuclear Radiation	...					

## Compatible drone Platform

M300RTK  
M200 series

## Application

**Leak Detection**  
**First Responder**  
**Environmental Monitoring**  
**Measuring Fuel Sulfur Content (FSC) of ships**



## More information

<http://www.soarability.tech/>

## Contact

[inquiry@soarability.tech](mailto:inquiry@soarability.tech)



# ATMOSPHERIC POLLUTION DETECTION SYSTEM

☑PSDK

## Product and solution

1. It can detect up to 6 kinds of gases at the same time, using high-precision, high-sensitivity imported sensors, with an accuracy of ppb;
2. Based on PSDK development, using the SKYPORT interface, seamlessly docking with the DJI system, real-time transmission of flight data and inspection data;
3. Display the detection data on the visualized real-time map, including concentration value color change, curve change, raster map, etc.;
4. Historical records support visual analysis, including labeling on the map of monitoring points, concentration curve changes, average grid heat map changes, etc., and can be exported to Excel;

## Compatible drone Platform

M300RTK

M200 series

## Application

**Leak Detection**

**First Responder**

**Environmental Monitoring**

**Measuring Fuel Sulfur Content (FSC) of ships**

## Specs

- Weight: about 380g
- Size: 124\*124\*65mm
- Support sensor components at the same time: 6 groups
- Measurement accuracy: 0.001~100ppm
- "Sensor principle: infrared, electrochemistry, laser, PID, catalytic combustion, etc.

## More information

[www.hfuav.com](http://www.hfuav.com)

## Contact

[bxy800@126.com](mailto:bxy800@126.com)



# ATMOSPHERIC POLLUTION DETECTION SYSTEM

☑OSDK

## Product and solution

1. Real-time monitoring of multiple indicators in the air, including PM2.5, PM10, CO, NO2, O3, VOCs, H2S, flammable and explosive, etc.
2. Adopt the products up to the pipe pump + reaction chamber to ensure the stability of the air flow during the flight
3. Able to collect gas samples while monitoring
4. Real-time mapping of pollution, one-click production monitoring report
5. The command center can view monitoring video and air quality parameters in real time
6. Deep integration of software and hardware with DJI aircraft, support OSDK/PSDK+MSDK

## Compatible drone Platform

M300RTK

M200 series

## Application

Environmental inspections, construction site dust supervision  
Emergency rescue ecological monitoring  
Anti-drug investigation

## Specs

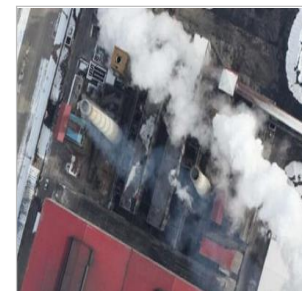
- Size: 200\*125\*110mm
- Weight: 500g
- Air intake mode: upper duct pump suction type
- Monitoring frequency: 0.5Hz

## More information

<http://www.szylkb.com/index>

## Contact

foober.xie@gmail.com



# MUVE™ C360 CHEMICAL HAZARDS DETECT

☑OSDK

## company intruducton

FLIR Systems, Inc. designs, develops, manufactures, markets, and distributes technologies that enhance perception and awareness.

## Product and solution

The FLIR MUVE™C360 is a multi-gas detector completely integrated with an unmanned aerial system (UAS) to provide real-time continuous monitoring of chemical hazards while on the move.

- Battery Specs Powered by the UAS
- Compatibility Currently compatible with DJI Matrice 210, V1 and V2, UAS
- Sampling & Analysis Real-time detection
- Training Requirements <30 mins for operator; 4 hours for advanced user
- Sensors CO, Cl<sub>2</sub>, O<sub>2</sub>, NO<sub>2</sub>, H<sub>2</sub>S, SO<sub>2</sub>, LEL
- PID VOC 10.6 eV (ppm)
- Total Weight Payload 1.5 lb (680.39 g) - C360 with dock and snorkel

## Compatible drone Platform

M300RTK

M200 series

## Application

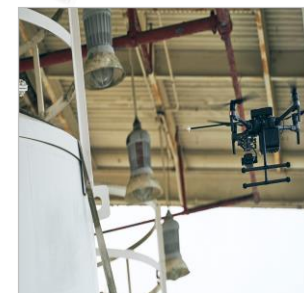
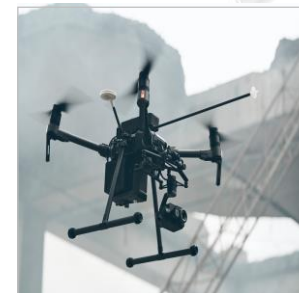
chemical hazards detect

## More information

<https://www.flir.com/products/muve-c360/>

## Contact

<https://www.flir.com/products/muve-c360/>



# MS600PRO MULTISPECTRAL CAMERA

☑PSDK

## Product and solution

- 6 band
- Calibration correction
- Real-time image transmission: data processing: support Ysense Map, Pix4D offline processing and "end-cloud integration"
- Synchronous data upload
- Storage/working temperature range: -30°C~+70°C/-10°C~+50°C
- Environmental adaptability: sapphire window, scratch-resistant, abrasion-resistant and durable

## Specs

- Field of view: 43.6°HFOV; 33.4°VFOV
- Typical width: 96m\*72m@h=120
- The shortest photo interval: 1s
- Spatial resolution GSD7.5cm@h=120m"
- Trigger mode: timing, overlap rate
- Storage space: default 64G,
- Maximum 128G" power consumption: average 7W, peak 10W
- Interface: DJI-SKYPORT
- Weight: 290g
- Image format: TIFF, JPEG



## APPLICATION

Remote sensing for agriculture analytics  
Bursaphelenchus xylophilus surveillance  
River ecological environment monitoring  
Poppy plant screening

## Compatible drone Platform

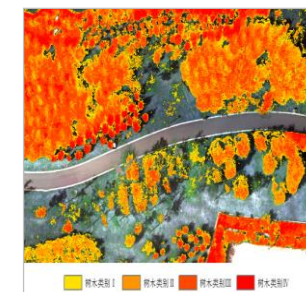
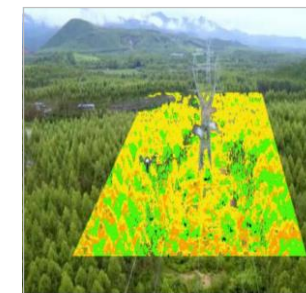
M300RTK  
M200 series

## More information

[www.yusense.com.cn](http://www.yusense.com.cn)

## Contact

[info@yusense.com.cn](mailto:info@yusense.com.cn)



# AIRBORNE SPECTRUM ANALYZER

☑PSDK

## Product and solution

1. Border and conventional area radio spectrum monitor and Management ;
2. Search, location, evidence collection and Law Enforcement Assistance of illegal broadcasting stations;
3. Testing and finding interference sources for mobile communication network;
4. Radio collar location tracking and outdoor rescue of wildlife;
5. Electronic countermeasure.

## Specs

- Frequency range: 80MHz ~ 6000MHz
- Direction finding accuracy:  $\leq 4^\circ$  rms
- Direction finding sensitivity:  $\leq 50\mu\text{V/m}$

## Application

- Illegal Repeater Interference Remediation
- Illegal radio interference investigation
- Emergency communications



## More information

<http://www.donasas.com/content/?154.html>

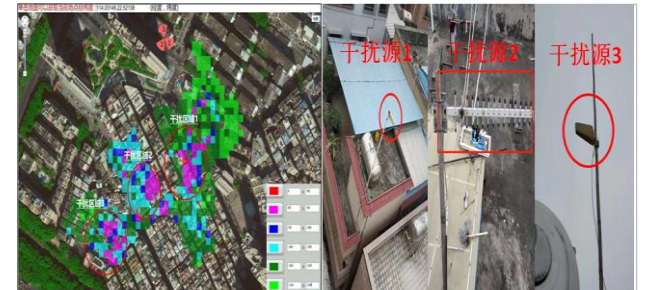
## Contact

future\_uav@126.com

## Compatible drone Platform

M300RTK

M200 series



# THERMAL CAMERA WITH 50MM LENS

☑PSDK

## Product and solution

1. 50mm motorized lens, can shoot long-distance targets;
2. 25Hz frame rate, suitable for high-speed target shooting;
3. Can record pictures and videos with temperature data;
4. Various temperature measurement methods, pointing temperature measurement and multi-zone temperature measurement;
5. Supporting special analysis software;

## Specs

Weight: 650g  
Resolution: 640\*480  
Frame rate: 25Hz  
Lens: 50mm

## Compatible drone Platform

M300RTK  
M200 series

## APPLICATIONS

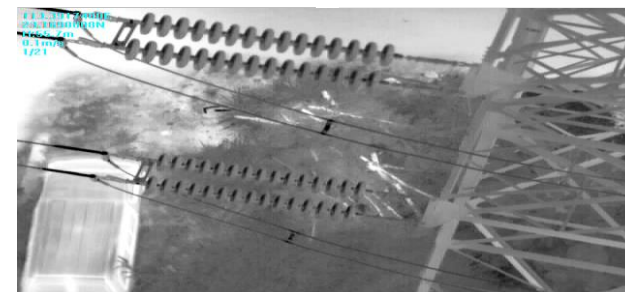
Power line inspection  
Forest fire prevention

## More information

<http://www.keii.com.cn/>

## Contact

keii@keii.com.cn



# SINGLE-LINE LIDAR

☑PSDK

## Product and solution

1. Data is automatically associated with the tower
2. Automatic tracing of the wire and imitating sag flight
3. Fully autonomous obstacle avoidance
4. Real-time detection of wire defects and wire tree distance
5. Automatically generate defect analysis report

## Specs

Weight: 324g  
Maximum speed: 600rp  
"Range measuring range: 0.15m-30m  
Scanning angle: 1°  
Ranging accuracy: 5cm  
Maximum flight speed of automatic line inspection:  
3m/s  
Ranging resolution: 1cm

## Compatible drone Platform

M300RTK  
M200 series

## APPLICATIONS

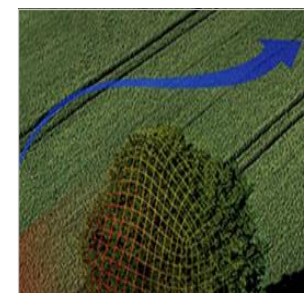
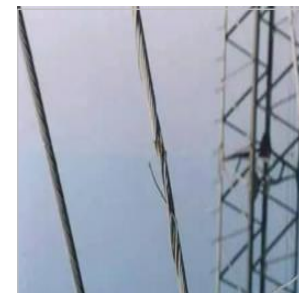
Real-time detection of power line tree barriers  
Detection of wire defects  
Completion acceptance and alignment  
real-time obstacle avoidance

## More information

<http://www.imapcloud.cn/radar/>

## Contact

market@imapcloud.cn



# DUAL-CAMERA HD ZOOM AI GIMBAL CAMERA

☑PSDK

## Product and solution

1. Products developed for high-definition shooting and large zoom needs
2. Can shoot 20 million pixel high-definition pictures, 1080P video recording, maximum focal length 720mm
3. At the same time, it has a wide-angle field of view and a zoom field of view for easy target positioning
4. Built-in high-performance processor, can identify more than 19 types of power transmission line tower targets, complete automatic shooting of power inspection
5. Support OSDK automatic flight control, you can connect M210 through the gimbal camera for OSDK flight
6. Supporting APP developed by MSDK, can perform manual flight and automatic flight
7. Supporting laser point cloud processing software, can plan autonomous flight routes based on .las point cloud, and import APP

## APPLICATIONS

Visible light fine power inspection (main) Fine inspection of other industries

For police, border defense, etc., scenes that have observation requirements for both local details and wide-area information

## Specs

1. Photo resolution 5184x3888
2. Number of pixels: 20.4 million
3. Lens focal length: 24mm-720mm
4. Optical zoom factor: 30 times
5. Processor: Nvidia TX2
6. PTZ: Three-axis FOC
7. Weight: 470 grams

## More information

[www.hyperfd.com](http://www.hyperfd.com)

## Contact

[info@hyperfd.com](mailto:info@hyperfd.com)



## Compatible drone Platform

M300RTK

M200 series

# LIAR V UAV LIDAR SCANNING SYSTEM

☑PSDK

## Product and solution

The LiAir V series is a light and small lidar point cloud data acquisition system independently developed by Digital Green Valley(integrated with Livox Mid-40 laser, based on a limited field of view of 38.4°), and can be mounted on M600 (weight 2.8kg), M200 (Weight 1.3kg) and other flying platforms. The product incorporates digital green earth cloud trace technology, supports a base-less operation mode, and works with LiPlan, LiCloud, LiDAR360, LiPowerline and other series of software, which can provide data collection, processing analysis, and customized reports for forestry investigation, topographic mapping, and power inspection users Wait for a one-stop solution.

## APPLICATIONS

Power line inspection

Forestry survey

## Specs

Weight (without mounting) 1.03kg  
Scanning range 90m@10% reflectivity;  
130m@20% reflectivity; 260m@80%  
reflectivity  
Elevation accuracy  $\pm 5\text{cm}$   
Field of view 38.4°  
Power consumption 20W

## More information

<https://www.lidar360.com/archives/7705.htm>

## Contact

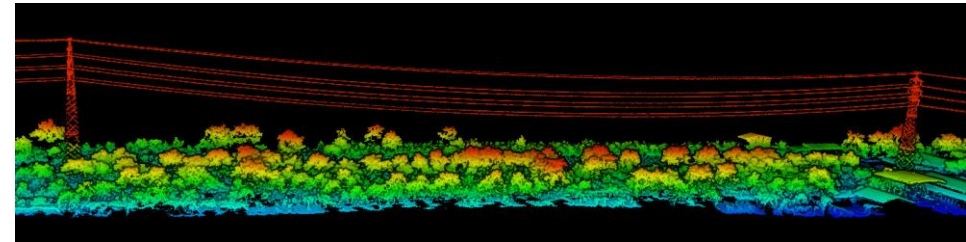
info@lidar360.com



## Compatible drone Platform

M300RTK

M200 series



# FOUR IN ONE CORONA CAMERA

☑PSDK

## Product and solution

It is a combination of UV, infrared, visible light, and laser range finder. It works on DJI enterprise platforms to help discover the potential safety hazards of insulator in time. With the 1:1 UV and IR synchronous display, the detection of corona and heating can be done simultaneously. Defect identification function can be developed on the powerful built-in processor.

## APPLICATIONS

- Ultraviolet fine power inspection in the 240-280nm band (main)
- Inspection of high-voltage insulation components and equipment in other industries

## Compatible drone Platform

M300RTK

M200 series

## Specs

Ultraviolet resolution: 720x576

Infrared resolution: 256x192

Visible light resolution: 1080P

UV sensitivity:  $3 \times 10^{-18} \text{W/cm}^2$

Ultraviolet viewing angle:  $9.6^\circ \times 7.2^\circ$

Processor: Hisilicon 3559C

Laser ranging range: 40 meters

PTZ: Three-axis FOC

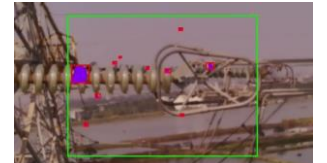
Weight: 800 grams

## More information

[www.hyperfd.com](http://www.hyperfd.com)

## Contact

[info@hyperfd.com](mailto:info@hyperfd.com)



# PD4 POWER DROP KIT

☑PSDK

## Product and solution

PD4 is installed on the Drone of DJI M300RTK. It is able to carry diverse loads and release them to the specific areas. The staff can monitor the live view of scenario while delivering the loads remotely to help with the emergency rescue tasks.

PD4 is applicable to occasions where relief supplies should be delivered urgently. The airdrop can deliver them quickly and easily when they are difficult to reach.

## Specs

P/N.	KEY FEATURES.	Specs.	Notes.
PD4.	Installation mode.	Detachable via DJI SKYPORT.	∩
	Weight.	275g.	∩
	Total load weight.	2.5Kg.	The load weight of M300RTK is 2.7Kg.
	Max. release times/Flight.	4.	∩
	Built-in camera live video stream resolution ∩	1080P@25P.	∩
	Control APP.	DJI PILOT.	∩
	Supported Drone Platform ∩	DJI M300RTK.	It is recommend to use single gimbal bracket. ∩

## Compatible drone Platform

M300RTK

M200 V2 series

## APPLICATIONS

Emergency Rescue

Deliver goods

## More information

[WWW.JILDRONE.COM](http://WWW.JILDRONE.COM)

## Contact

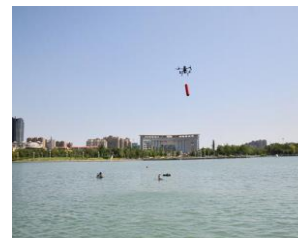
[sales@jilidrone.com](mailto:sales@jilidrone.com)



Live video stream



DJI PILOT support



Emergency Rescue



Deliver goods

# VECTOR FIVE-LENS AERIAL OBLIQUE CAMERA

☑PSDK

## Product and solution

1. It can be mounted seamlessly with M200/M210 and has high integration, portability, ease of use and safety.
2. The weight of the camera is less than 510g, and the pixels are about 50 million. It is equipped with a USB interface and supports direct export of photos + GPS information.
3. Adopting the binocular tilt measurement program, combined with the original perspective cross and side overlap technology, can achieve high-precision three-dimensional real-world modeling and large-scale map data production.
4. The self-developed Wing ground station App can realize polygonal route planning, one-key take-off, automatic return, and breakpoint continuous flight.

## APPLICATIONS

Surveying

## Specs

Weight: 510g  
Number of cameras: 5  
Total pixels: 120 million

## More information

<http://www.sensewingrobot.com/>

## Compatible drone Platform

M300RTK  
M200 series

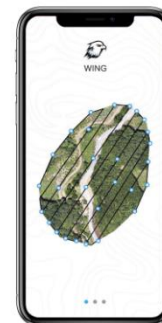
## Contact

contact@swrob.com

**VECTOR**   
双目倾斜航空影像系统



**WING**  
倾斜摄影航线规划软件



# D2MPSDK FIVE-LENS AERIAL OBLIQUE CAMERA

☑PSDK

## Parnter introduction

1. committed to becoming the world's leading solution provider of geospatial information data collection and post-applications.
2. has been focusing on oblique photography for 5+ years,more than 500 units sold per year,2500+ businesses worldwide trust Rainpoo.

## Product and solution

1. Self-developed optical lens:born for photogrammetry.
2. Intelligent data-preprocessing software: download photos with one-click and save the 3D modeling time.
3. Easy to use:use mobile phone Bluetooth to control camera.
4. Robust and safe:the shell made of CNC aluminum alloy is used to protect the important lenses.
5. Reasonable focal lengths:One vertical 25mm,four obliques 35mm,ensure that the resolution of five lenses is consistent.
6. Synchronization control: support the timesync tech,improve the accuracy of RTK data.
7. Independent data-storage module:download speed of photos can reach 300m / s.
8. Sky-filter:a supporting software that can eliminate the invalid photos in the extended flight route.
9. Real-time feedback:can show the working state of five lenses on the screen to avoid invalid flight.
10. Parameter-Adjust module:allow to adjust the ISO and shutter speed of five lenses according to weather condition.

## Compatible drone Platform

M300RTK

## APPLICATIONS

Cadastral survey  
Urban planning  
Smart City  
Real Estate Confirmation  
Integrated premises and emergency command

## Specs

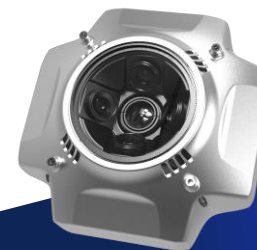
QTY of Lens	Specs
Effective Pixels	24.3MP(single lens)/120MP(in total)
Focal Length	25mm(Vertical)/35mm(Oblique)
Size	145*145*87.5mm
Weight	780g
Sensor Size	APS-C,23.5*15.6mm
Exposure Interval	≥0.8s
Camera exposure mode	Ischronic/Isometric Exposure
Lens Angle	45 degree
Power Supply	SkyPort integrated power
Storage	64GB*2
Data download speed	≥300M/s
Work temperature	-10℃~+50℃
IP rate	IP 43

## More information

<https://www.rainpoo.com/>

## Contact

[jack@rainpoo.com](mailto:jack@rainpoo.com)



# MS-SMART2 FIVE-LENS AERIAL OBLIQUE CAMERA

☑PSDK

## Motorsky introduction

1.Motorsky is a technology enterprise focusing on the R & D, design, production and flight service of multi rotor UAV and five- lens aerial oblique camera,motorsky is committed to providing users with more efficient data acquisition methods and higher value data applications  
2.Motorsky aims to provide users with a complete set of perfect services from software and hardware, to technical support, and then to project cooperation.

## Product and solution

1. With the new upgraded image sensor, the imaging, quality is more delicate and the color restoration is more excellent
2. Equipped with third generation lens Lower dispersion lens group and UV filters Higher lens consistency Distortion free design
3. Support DJI timeSync time synchronization technology
4. Smart-2 is equipped with independent POS recording module, which can record POS information through flight platform
5. Low wind resistance fuselage design can reduce the pressure drop resistance of UAV's plug in equipment in forward flight and provide longer flight time
6. Support for DJI psdk In addition, it is compatible with all kinds of UAVs on the market and matches with rich accessories
7. High speed data transmission, Support quick change, two sets of memory modules can realize uninterrupted flight acquisition, No need to wait for data to be exported
8. MS CCS Pro is a preprocessing software for MS smart tilt camera to export corresponding data and post-processing. It can realize the whole process from image processing to XML configuration file generation of reconstruction software.

## Compatible drone Platform

DJI M300RTK、DJI M210 M210RTK

## APPLICATIONS

Cadastral survey

Three dimensional city

Application of GIS system

Building information modeling

Emergency relief

Modeling of ancient architecture

Application of geological remote sensing



## Specs

Dimensions	167-148-86mm	Weight	580g
Lens group focal length	25-35mm or full35mm	pixels	120 million
Lens arrangement angle	45°	Sensor size	APS-C
Number of cam	5	Photo size	6000x4000Pix
Minimum photo interval	0.2s	Storage capacity	640G
Working temperature	-20-55°C	Protection level	IP54
software	MS CCS PRO	Power on self test	Support
Support	Support	Working state of five channel camera	real-time display
Data export speed	300MB/s	Exposure time synchronization	Support
Cam independence	Support	POS Storage mode	TF card
no photo control point(L1 100)	Support	Working status display in app	Support
Photo quantity feedback	Support	M300Carrying endurance	~45min
DJI TERMA	Support	Ortho camera lens support	25mm or 35mm

## More information

<http://www.motorskytech.com/>

## Contact

[Office@motorskytech.com](mailto:Office@motorskytech.com)



# EVO320 LIGHTWEIGHT FIVE-LENS AERIAL OBLIQUE CAMERA

☑PSDK

## Partner introduction

1. Focus on R&D and manufacturing of aerial oblique photography equipment for more than five years.
2. More than 100 large professional users are using our products.

## Product and solution

1. Practical: A large number of engineering examples are verified, which can meet the high-precision measurement requirements such as cadastral survey and 1:500 topographic map, and support the control point-free operation based on M300RTK.
2. Lightweight: The weight of the lens body is only 350g, and the volume is only 105mm×105mm×80mm. It is currently the smallest and lightest five lens on the market, which can greatly increase the flight time.
3. Convenience: Innovative storage technology enables quick replacement of storage units and synchronization of flight operations and data copying, which is faster and more convenient.
4. Intelligent: Through the built-in intelligent control panel and pos-data processing software, the camera can realize automatic self-checking, one-click photo screening, initialization, and useless photo removal, etc.

## Compatible drone Platform

M300RTK

## APPLICATIONS

1:500 topographic map survey  
elevation survey  
cadastral survey  
earthwork and mine survey  
real scene 3D GIS application

## Specs

Name	Parameter
Camera weight	350g
Maximum size	105×105×80mm
Number of cameras	5
Camera pixels	120 million
Sensor size	23.5×15.6mm (APS-C)
Pixel size	3.9μm
Lens focal length	35mm/25mm
Minimum photo interval	0.8s
Working environment temperature	-20°C to +60°C
Shell material	High-strength nylon
Data storage mode	Replaceable usb3.0 memory
Mounting method	Skyport

## More information

<http://www.airtoptec.com/>

## Contact

[service@airtoptec.com](mailto:service@airtoptec.com)



# FM-AIRCAM3 FIVE-LENS AERIAL OBLIQUE CAMERA

☑PSDK

## Corporation profile

1. The company is specialized in the data collection equipment of surveying and mapping geographic information, UAV SDK development, aerial photogrammetry equipment research and development, sales, technical support, the research, development and production of UAV oblique cameras.
2. Committed to the software development related to UAV oblique photography and aerial survey.

## Products and solutions

1. Integrated card slot: the memory cells are removable, unplug the memory card to export data.
2. One-key repair error button: If the camera exists any program errors, press the button to directly repair problems without returning to the factory.
3. Turbo cooling fan: 2 turbo fans, to meet the summer operation and no dust.
4. 6-in-1 high-speed data export module: export speed up to 300M/S, preprocessing time decreased by 90%.
5. DJI SkyPort: it synchronizes with M210 and M300 ground stations.

## Compatible drone Platform

M300RTK

## APPLICATIONS

Cadastral survey  
Urban planning  
Security control  
Ancient building protection  
Emergency command  
Earthwork calculation

## Specs

Number of camera lenses	5pcs
Focal length	25mm+35mm
Effective Pixels	24.3MP(single lens) / 120MP in total
The shortest exposure time	≥0.8s
Sensor Size	23.5*15.6mm(APS-C)
The tilt angle of oblique camera lenses	45degree
Total memory capacity.	640GB
Power supply	UAV power supply / independent power supply
Data reading speed	300M/S
Operating temperature	-10°C~+40°C
Size	140*140*90mm
Weight	650g

## More information

<http://www.fmhkuav.com/>

## Contact

[774655134@qq.com](mailto:774655134@qq.com)



# PSDK VECTOR DIGITAL OBLIQUE AERIAL CAMERA

☑PSDK

## Partner introduction

Guangzhou Sense Wing Robot Technology Co., Ltd.

1. Professional Researcher and Developer of UAV Intelligent Devices.
2. Experienced Designer and Developer of UAV Intelligent Softwares.
3. Capable Provider of Integrated UAV Application Solutions.
4. Dedicated to Make UAVs Smarter.

## Product and solution

1. Intelligent Detection System: Escorting Every UAV Operation.
2. Intelligent Thermal Control System: Built-in Thermal Control with Smart U-loop Structure Enabling Smart Heat Dissipation of Each Component.
3. Intelligent PSDK System: Seamless Compatibility with DJI, a Wholly Under-control Camera with Real-time Working Status Displayed on DJI App or Control.
4. Intelligent Power Supply System: Easy and Safe Centralized Power Supply through USB3.0 by Aerial Vehicles or Laptops, Plug and Play!
5. Intelligent Power Saving System: Negligible Power Consumption Saving Energy for a Highly Efficient Operation.
6. Smart Accurate photographing System: Based on Patented Technologies of Image-free Control and Time Synchronization, Pictures and POS information from every flight are automatically matched and can be conveniently exported.
7. Smart, Exquisite, Light and Convenient.

## Compatible drone Platform

M200V1、M200V2、M300RTK、M600、M600PRO

## APPLICATIONS

Cadastral Survey  
Urban Planning  
Real Estate Integration  
Smart Cities  
House Surveying  
Public Security and Fire Control

## Specs

Pixel of a Single Lens: 24 million  
Total Pixel: 120 million  
Dimension of Sensors: 23.5mm\*15.6mm (APS-C)  
DPI: Single 6000\*4000  
Trigger mode of shutter: Trigger by Flight Control Signal  
Interval of stable photographing: >0.7s  
Number of Lens: One central directed nadir25mm +four oblique 35.6mm  
Cameras: Special Fixed Focus Lens for Aerial Photography installed at an internal inclination

## More information

<http://www.swrob.com/>

## Contact

[contact@swrob.com](mailto:contact@swrob.com)

